



<b>POWERFUL</b>	802.11 A/B/G/N, 2X2 MIMO, 26DBM
<b>FAST</b>	INSTALLS IN MINUTES
<b>EASY</b>	SELF OPTIMIZING VIRTUAL CONTROLLER

## POWERFUL WI-FI FOR HOTELS, DORMITORIES AND HOSPITALS

# AP 6511 802.11N WALLPLATE ACCESS POINT

The AP 6511 was designed to be installed in any location; plenum space, flush to a wall surface, or over a structured wiring telecom box. This intelligent product design allows the wireless LAN to be installed in minutes, not hours, to support a range of mobile devices such as laptops, tablets, and smartphones. In multiple dwelling units such as hotels; high attenuation fire walls, mirrors, plumbing and ceramic tile can require extensive planning for the wireless LAN. Because the AP 6511 can be installed by standard service personnel using existing CAT5/6 cabling in the wall, deployment is a snap. The AP's sleek "hide in sight" design and small size blends with the room aesthetics, very important for hospitality markets.

### OPERATIONAL FLEXIBILITY

Motorola WiNG 5 software provides self-healing SmartRF and adaptive AP architecture to optimize the network performance and ensure 100% uptime for connected devices. WiNG 5 adaptive architecture ensures the network continues to operate even if the Controller fails. The high performance design and 802.11n 2X2 MIMO radio covers six to ten hotel guest rooms. The AP 6511 supports all current 802.11a/b/g/n devices with role based access, 802.1x, fast roaming, WMM QoS, and intrusion detection.

### MODULAR FLEXIBILITY

The AP 6511 features a snap-in port for any keystone style connector e.g. RJ11 or TV coax, so multiple services can be supported on a single integrated AP 6511. Because guest rooms often require additional Ethernet ports for voice service, minibar monitoring or even guest wireline; a snap-on three port Ethernet module is available to easily expand the number of available ports. The rapid installation is predictable and repeatable across multiple properties. Installation in minutes rather than hours will dramatically lower deployment costs.

### ARCHITECTURE FLEXIBILITY

The AP 6511 includes self optimizing intelligent Controller AP code, so a single AP 6511 can serve as a master for up to 24 dependant AP 6511 access points. Small properties and facilities will have all the benefits of a centralized RF controller - automatic adoption and centralized configuration - without the cost of a dedicated switch. With WiNG 5 intelligence, any AP 6511 can be managed by a Motorola RFS series controller for coordinated quality at the edge and massive scalability across indoor and outdoor WLANs.

Each radio in an AP 6511 can be repurposed as a sensor for AirDefense connectivity troubleshooting and spectrum analysis in real-time, so the level-1 technician in the network operations center can immediately respond to user issues and provide highly useful, real-time troubleshooting without the expense of placing separate, fixed sensors.

## FEATURES

### High Power Radio

26dBm and high receive sensitivity supports any wireless device; from high powered stations to low power mobile devices.

### Sleek Design

The tiny size and modular design allows the AP 6511 to be adapted to multiple applications. The universal mounting system can be installed anywhere - in a hotel guest room or in a hallway or lobby.

### Scalable Management

Designate one AP 6511 to act as an RF Controller for a network of up to 25 AP 6511s. Ideally suited to small facilities, the Controller AP features auto-adoption, auto-configuration, central diagnostics, and SmartRF tuning to maximize performance and provide redundant, self-healing coverage.

# AP 6511 SPECIFICATIONS CHART

## AVAILABLE INTERFACES

Wireless Interface	Single radio; 802.11a/b/g/n; 2.4Ghz or 5.2Ghz
LAN Ethernet port	IEEE 802.3 10/100Mb auto-sensing via 8-pin header
Uplink LAN Ethernet	IEEE 802.3 10/100Mb auto-sensing
Snap-in port	Supports any Keystone or QuickPort®* style connector

## WIRELESS SPECIFICATIONS

Medium	DSSS, OFDM, MIMO
Standards	802.11a, 802.11b, 802.11g, 802.11n draft 2.0
Data Rates	802.11b: 1, 2, 5.5, 11Mbps 802.11g: 6,9,12,18,24,36,48, 54Mbps 802.11a: 6,9,12,18,24,36,48, 54Mbps 802.11n: MCS 0-15 up to 300Mbps
Operating Frequencies	2.4GHz: 2400 -2483.5 MHz 5.2GHz: 5150 - 5250 Mhz; 5725 - 5850 Mhz Actual operating frequencies depend on national regulatory limits
Transmit Power settings	6dBm to 24dBm, in 1dB increments; Actual Tx power dependant on national regulatory limits
Receiver Sensitivity	2.4Ghz: 802.11b 1Mb = -97dBm; 802.11g 54Mb = -83dBm 802.11n MCS15 40Mhz = -72dBm 5.2Ghz: 802.11a 6Mb = -99dBm, 54Mb = -84Bm 802.11n MCS15 40Mhz = -74dBm
Antenna Configuration	Two internal omni-directional, 1x2 or 2x2 MIMO operation 2dBi peak in 2.4 Ghz; 4.5dBi peak gain in 5.2 Ghz

## ORDERING INFORMATION

Part Number	Description
AP-6511-60010-US	Single radio 802.11a/b/g/n Wallplate AP. Low profile. One Ethernet PD uplink port, one FE LAN port included. Optional Ethernet Module. RF Controller AP feature included. US-only version supports FCC channel set.

\* QuickPort is a registered trademark of Leviton Corporation

AP-6511-60010-WR	Single radio 802.11a/b/g/n Wallplate AP. Low profile. One Ethernet PD uplink port, one FE LAN port included. Optional Ethernet Module. RF Controller AP feature included. WR version supports individual country channel sets as required.
------------------	--------------------------------------------------------------------------------------------------------------------------------------------------------------------------------------------------------------------------------------------

KT-6511-0000D-WR	Three port Fast Ethernet Module for AP-6511
------------------	---------------------------------------------

## WLAN AND NETWORKING

BSS	8 BSSIDs, 16 SSIDs
Virtual AP	Per WLAN beacon en/dis, client isolation, SSID authentication, encryption, bitrate, VLAN ID, WMM
VLANs	4000 VLANs; VIDs 1 - 4095

## SECURITY

AP Mgmt	SSH, HTTPS, SNMP v3
WLAN	WEP static, WEP Dynamic (802.1x) WPA/TKIP Personal and Enterprise WPA2/TKIP/AES Personal and Enterprise, all EAP types

## POWER

AP+1 LAN port ~5.5W typical, AP+4 LAN ports ~8W 802.3af compliant uplink LAN port
--------------------------------------------------------------------------------------

## PHYSICAL

4.9" x 2.7" x 1.1" (124mm x 70mm x 29mm). 12oz (0.34Kg) Two single color status LEDs; power, error, packets, operating frequency
-------------------------------------------------------------------------------------------------------------------------------------

## ENVIRONMENTAL

0 - 40 degrees Celsius, 5% to 90% NC
--------------------------------------

## MOUNTING

Universal mounting bracket for worldwide telecom plates; mounting options include over a telecom wall plate or flush surface mount
------------------------------------------------------------------------------------------------------------------------------------

## COMPLIANCE

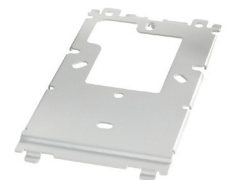
FCC 15.247, 15.407 / EN300 328, EN 301 893; UL EU EN 60950-1 2nd Ed., ANZ C-Tick, UL 2043; FCC Part 15 Subpart B, EN 55022: 2006 + A1: 2007, ICES - 003 (Class B) EN 55024: 1998 + A1: 2001 + A2: 2003; EU RoHS Directive 2002/95/EC; CE, IC, FCC
---------------------------------------------------------------------------------------------------------------------------------------------------------------------------------------------------------------------------------------------------



**BASE AP**



**SNAP-IN ETHERNET PORT (INCLUDED)**



**MOUNT BRACKET (INCLUDED)**



**RJ-45 CABLE, 2" (50mm) (INCLUDED)**



**ETHERNET MODULE KT-6511-0000D-WR**

For more information on how the AP 6511 can benefit your business, please visit us on the web at [www.motorola.com/ap6511](http://www.motorola.com/ap6511) or access our global contact directory at [www.motorola.com/enterprisemobility/contactus](http://www.motorola.com/enterprisemobility/contactus)